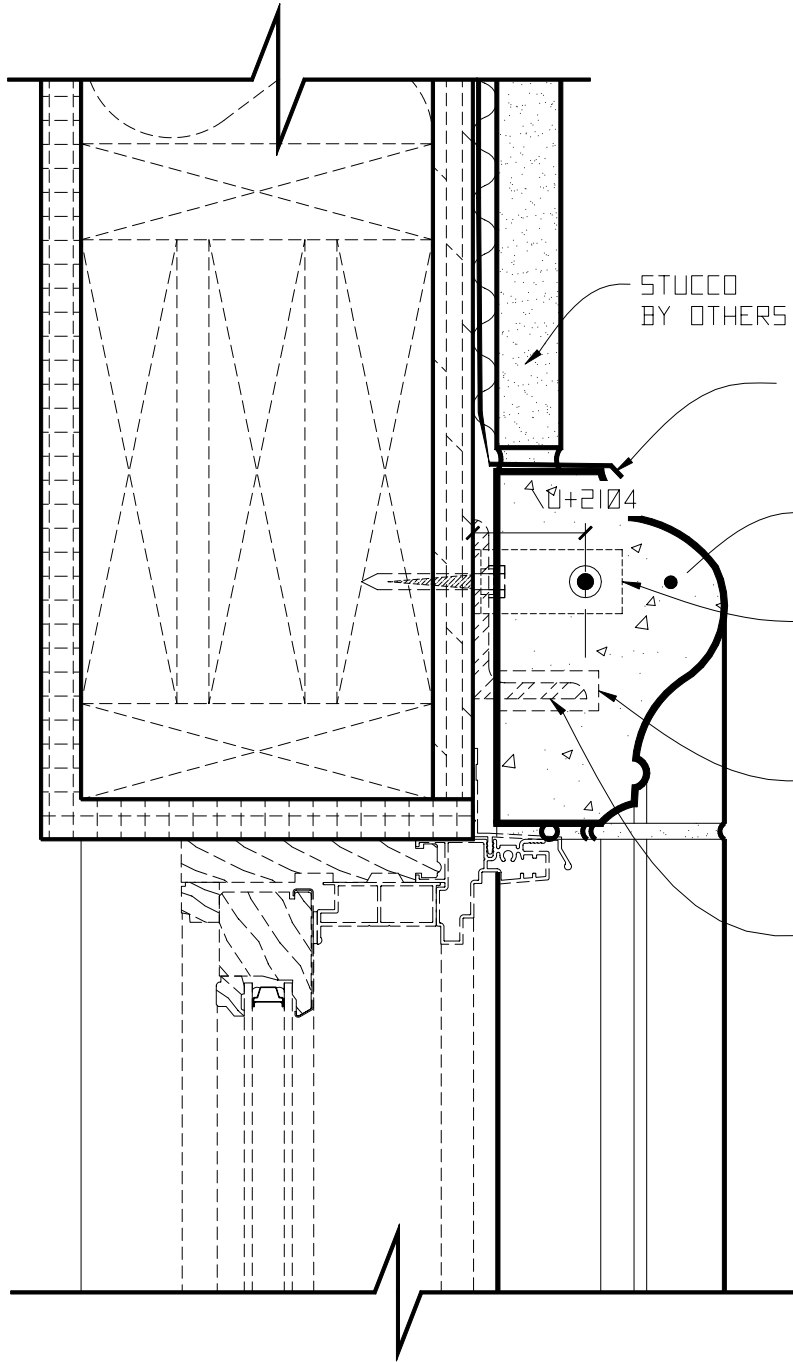


THESE DRAWINGS ARE SUGGESTED
INSTALLATION DETAILS ONLY;
ALL ATTACHMENTS, STEEL SIZES,
GAUGE THICKNESS, AND ANCHOR
SIZES SHOULD BE CALCULATED
BY A STRUCTURAL ENGINEER;
WE ARE NOT LIABLE FOR
INSTALLATION OF ANY KIND



FLASHING
BY OTHERS

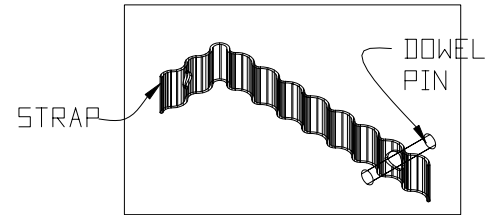
STUCCO
BY OTHERS

PROFILE: SALEM6
UNIT ID #16366

FIELD DRILLED HOLE
FOR PIN & STRAP ANCHOR.
SEAL ALL WATERPROOFING
PENETRATIONS

FIELD CUT SLOT WITH
RELIEF ANGLE. SEAL ALL
WATERPROOFING
PENETRATIONS

STEEL LINTEL AT
SQUARE TOP ONLY
BY OTHERS



1 ATTACHMENT OF HEADER TO STUCCO
WITH STRAP & DOWEL PIN AND RELIEF ANGLE

2 STRAP & DOWEL DETAIL
GALVANIZED OR BETTER

TYPICAL USES:
DOOR & WINDOW HEADER

STD 3/8" MORTAR JOINT

SCALE: N.T.S.

STONE LEGENDS

301 Pleasant Drive - Dallas, TX 75217
Voice (214) 398-0999 - Fax (214) 398-1293
Visit our website at www.stonelegends.com

CLIENT:

PROJECT: