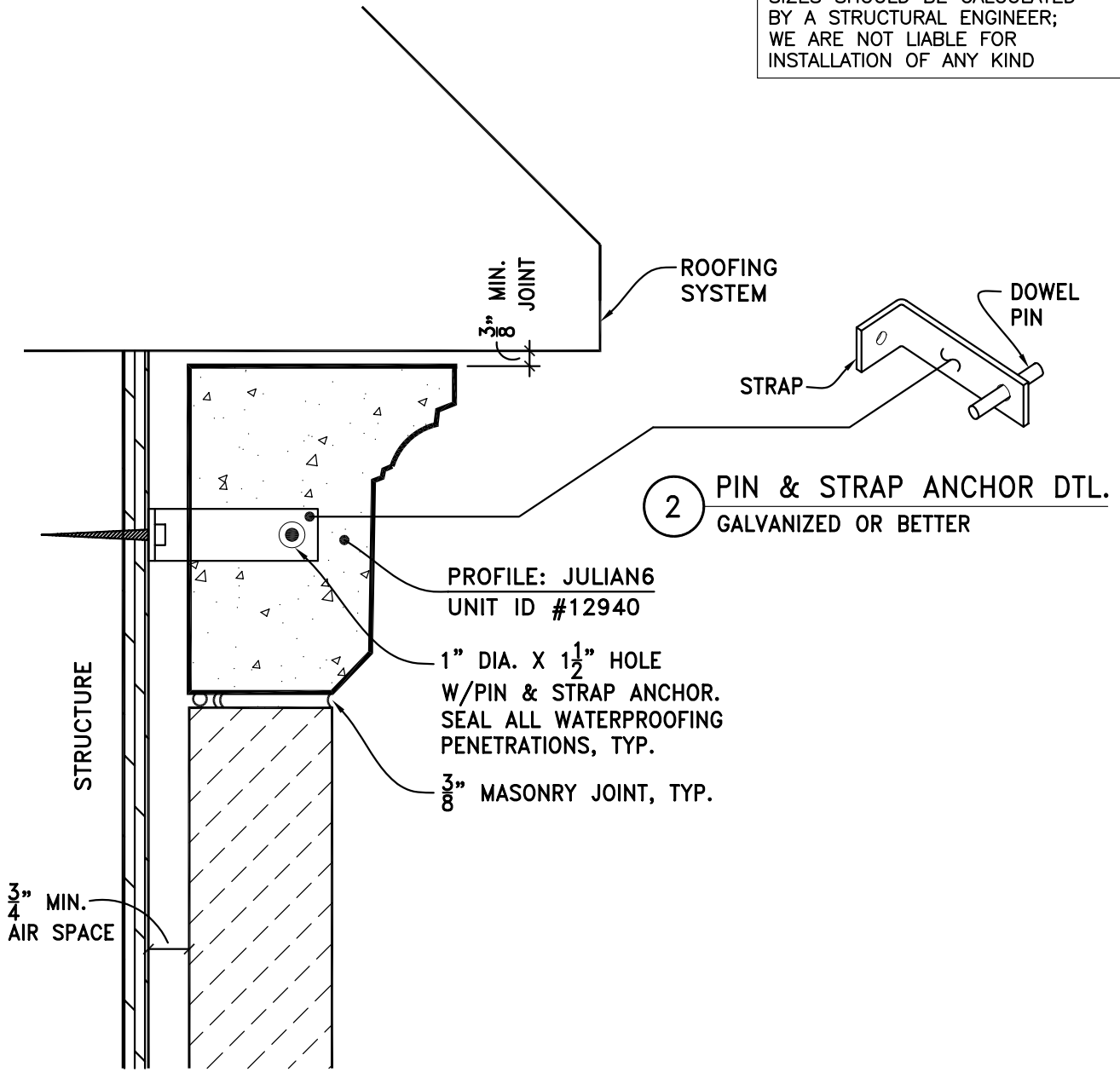


THESE DRAWINGS ARE SUGGESTED
INSTALLATION DETAILS ONLY;
ALL ATTACHMENTS, STEEL SIZES,
GAUGE THICKNESS, AND ANCHOR
SIZES SHOULD BE CALCULATED
BY A STRUCTURAL ENGINEER;
WE ARE NOT LIABLE FOR
INSTALLATION OF ANY KIND



2 PIN & STRAP ANCHOR DTL.
GALVANIZED OR BETTER

PROFILE: JULIAN6
UNIT ID #12940

1" DIA. X 1 1/2" HOLE
W/PIN & STRAP ANCHOR.
SEAL ALL WATERPROOFING
PENETRATIONS, TYP.

3/8" MASONRY JOINT, TYP.

3/4" MIN.
AIR SPACE

1 CAST STONE CORNICE ATTACHMENT AT MASONRY VENEER
WITH PIN & STRAP ANCHOR

STD 3/8" MORTAR JOINT

SCALE: N.T.S.

STONE LEGENDS

301 Pleasant Drive - Dallas, TX 75217
Voice (214) 398-0999 - Fax (214) 398-1293
Visit our website at www.stonelegends.com

CLIENT:

PROJECT: