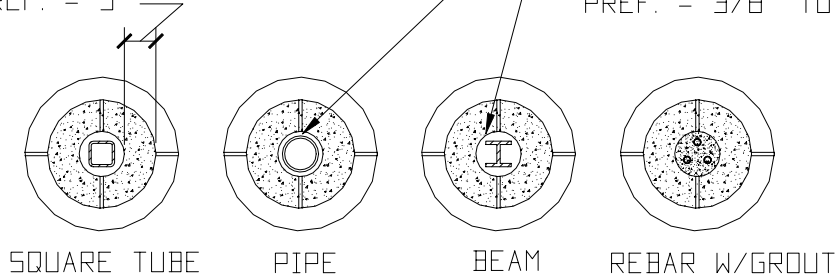


NOTE: TOP STRUCTURE IS CARRIED BY INNER COLUMN SEE DETAIL BELOW

MIN. STONE THICKNESS:  
 REQ. = 2 1/2"  
 PEF. = 3"

MIN. CLEARANCE BETWEEN STONE & STEEL:  
 REQ. = 1/4"  
 PEF. = 3/8" TO 1/2"



SUGGESTED INNER COLUMN STRUCTURE  
 W/VARIOUS REINFORCEMENTS

NOTE: THE REQUIREMENTS FOR ATTACHING STONE TO STRUCTURES, VARIES AMONG THE DIFFERENT STATES. A CERTIFIED ENGINEER THAT IS FAMILIAR WITH THE GEOLOGIC SEISMIC & CLIMATIC CONDITIONS OF YOUR AREA MUST DETERMINE THE BEST METHOD FOR ATTACHING THE STONE TO THE STRUCTURE. THE STONE SUPPLIER IS NOT RESPONSIBLE FOR PROVIDING INFORMATION ON ATTACHMENT METHODS AND CAN ONLY PROVIDE SUGGESTED ATTACHMENT METHODS. THESE SUGGESTED METHODS ARE WELL KNOWN AND HAVE BEEN USED THROUGHOUT THE INDUSTRY.

HOLLOW CAST STONE COLUMNS WERE NOT DESIGNED TO CARRY STRUCTURAL LOADS. THE LOAD MUST BE CARRIED BY AN INNER, (PREFERABLY STEEL) STRUCTURE. CONSULT A CERTIFIED ENGINEER THAT IS FAMILIAR WITH THE GEOLOGIC SEISMIC & CLIMATIC CONDITIONS OF YOUR AREA TO DETERMINE THE PROPER INNER STRUCTURE

CARE SHOULD BE TAKEN TO PREVENT THE INSIDE OF THE HOLLOW COLUMN TO TOUCH THE INNER STEEL STRUCTURE AS CONDENSATION ON THE STEEL CAN RUN DOWN THE COLUMN AND CAUSE RUST MARKS. IT IS ADVISABLE TO PAINT THE STEEL WITH A GOOD RUST PREVENTION PAINT. RE-BAR WITH A GROUT FILLING CAN BE USED IN CASES WHERE THE LOAD ON TOP OF THE COLUMN IS MINIMAL.

ATTACHMENT DRAWINGS HAVE BEEN INCLUDED AS SUGGESTED INSTALLATION DETAILS ONLY; ALL ATTACHMENTS, STEEL SIZES, GAUGE THICKNESS, AND ANCHOR SIZES SHOULD BE CALCULATED BY A STRUCTURAL ENGINEER; STONE LEGENDS IS NOT

LIABLE FOR INSTALLATION OF ANY KIND

① ATTACHMENT OF HOLLOW COLUMN TO INTERNAL STEEL STRUCTURE USING BEAM, SQ. TUBE, PIPE, OR REBAR W/GROUT

N.T.S.