

① TOP VIEW
 FLOOR OR POOL PATTERN
 SUGGESTED INSIDE COPE MITER

② 3D VIEW - EXAMPLE
 FLOOR OR POOL PATTERN
 SUGGESTED INSIDE COPE MITER

Cutting Corners

How can I make a corner from two straight parts of coping?

Step One

1. Use the back corner of the stone and find 45°. Cover with masking tape and mark.
2. Find the center on the side where its going to intersect at 45°. Cover w/ masking tape and mark.
3. Use the same measurement for the second piece and repeat.

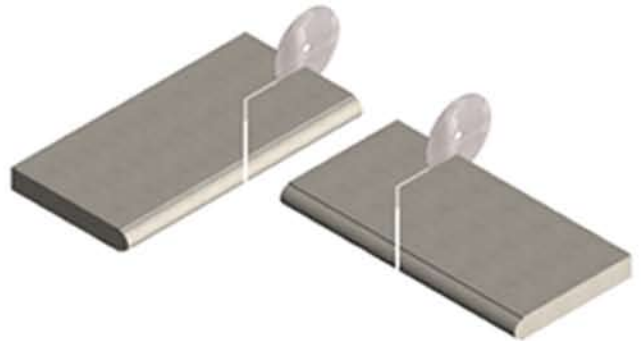


Tools Required

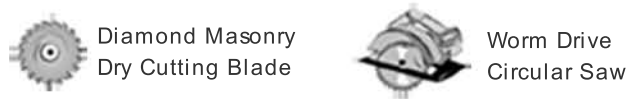


Step Two

1. Carefully cut the marked pieces using a skill saw with a diamond masonry dry cutting blade. For best results, use a worm drive.

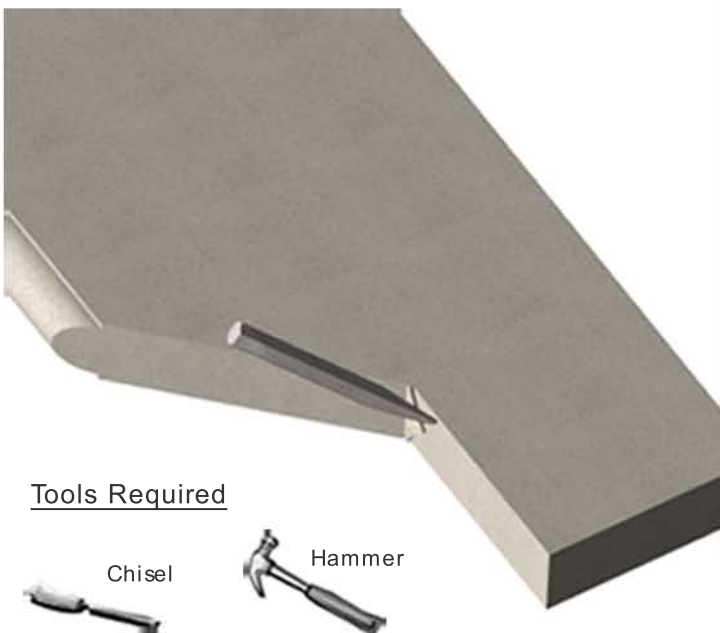


Tools Required



Step Three

1. Chisel out the remaining piece for best look.

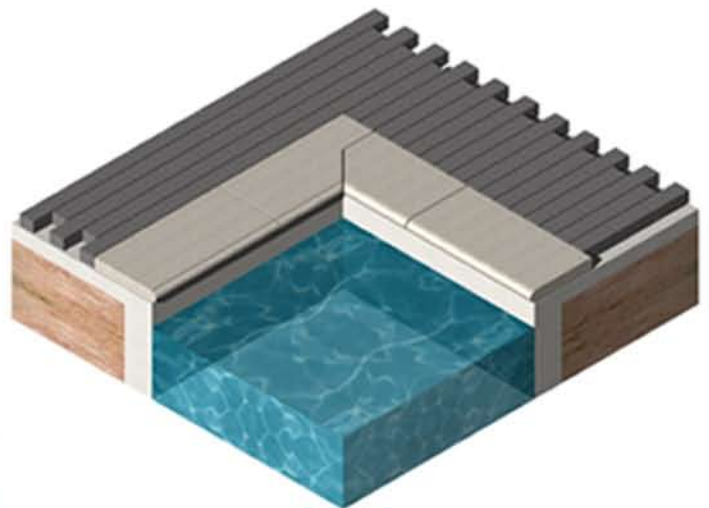


Tools Required



Step Four

1. Place stones and complete installation.



NOTE: Cutting stone using this method ensures aesthetics of the overall job and prevents chipping of the stone.