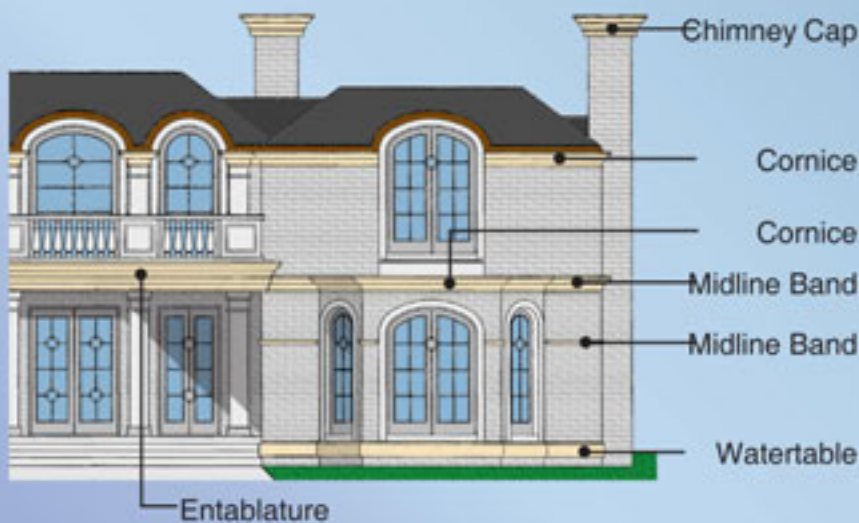


Accent Banding Legend

WRAP YOUR HOME IN BEAUTY!



WE CAN FILL ALL
YOUR BANDING NEEDS.
SEND US YOUR PROJECT PLANS
FOR A COMPLETE, COMPREHENSIVE BID.

STONE LEGENDS

301 Pleasant Drive • Dallas, TX 75217
(800) 398-1199 • FAX (214) 398-1293
www.stonelegends.com • sales@stonelegends.com

STONE LEGENDS

Watertable / Banding Legend

Strictly speaking, watertable refers to bands of material at the base of a wall that are designed to weather and shed water. With today's building materials, watertable is usually decorative. Architects and designers have expanded the traditional limits to tie water table into window sills, to match or contrast with other wall coping, and even to tie into balustrade hand rail. The results can be striking.

Ordering Watertable & Banding

Watertable and banding are sold by the linear foot (LF). For this reason, the following steps are discussed in order to simplify the selection process. Of course, the easiest solution is to send your plans to our estimators who will provide a comprehensive estimate.

Step 1: Selecting the Profile

Using the tables on the following pages, you will select the Profile shape that best fits your design style. We have many popular shapes to choose from and if you don't find what you like, there are more options in Chapter 9: Profiles - The DNA of Stone.



Profile Example: Bastion1

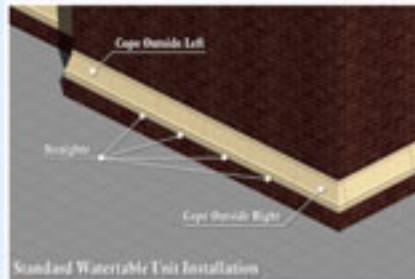
Step 2: Determine Linear Foot

Using your plans or manual measurements, calculate the total linear footage of your project.

Example: 230 Linear Feet (LF)

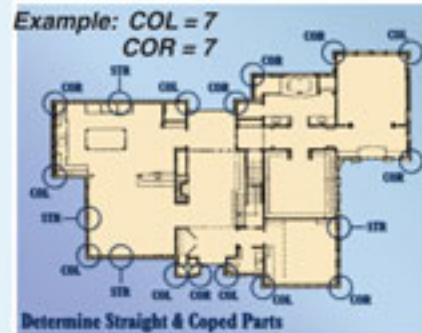


Calculate Total Linear Feet (LF)



Step 3: Determine Standard Turns

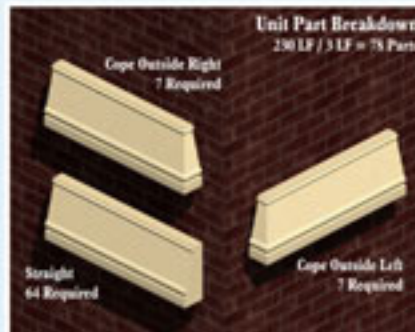
Transitional turns for corners are called Copes. A standard watertable or banding unit is composed of a Cope Outside Left, a Cope Outside Right and a Straight part (see above). In most cases, the standard unit will fit your needs. Some field cutting will be required for inside corners.



Step 4: Calculate Number of Parts

The standard length (Y) for a watertable or banding part is 36" (or 3 linear feet). Lengths can be adjusted and may require upcharges.

Now that you have all the information, you can calculate the required number of parts for your project.



Standard Miter

The standard watertable and banding units are delivered in standard lengths (Y) and require some cutting in the field, primarily for inside corners. Both straight and coped parts can be cut easily to create a mitered corner.



Unit Options

Additional options are also available to help customize your watertable and banding units. These options can help speed installation or help solve design issues where openings or corners occur.

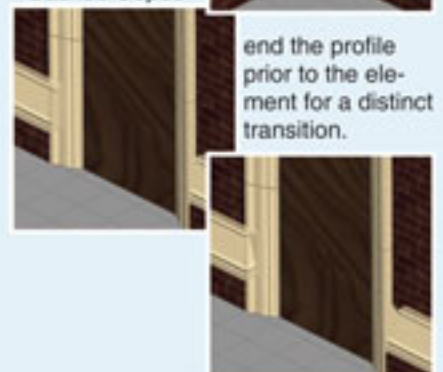


Optional Inside Copes help speed installation and add clean transitions.

Profile shapes can tie into other design elements easily.



Backed Copes



end the profile prior to the element for a distinct transition.