

STONE ORIGINS



Stone Origins

The natural cut stone resource

Stone Origins is the one source for all your cut stone needs, from architectural to tile, from interior to exterior, from a crate to forty containers of material, from residential to commercial.

Stone Origins offers the following advantages:

- Direct stone importer and fabricator
- Nationwide shipping / International logistics
- Strategic port facilities and warehouses within the U.S.
- Inhouse Estimating Dept., Drafting Dept., and Artist Studio
- A commitment to providing superior materials and services at a competitive price

There is no substitute for the warmth and beauty of natural cut stone, let Stone Origins benefit you by being part of your project.

Stone Origins Web Site

Stone Origins has created an interactive tool, the SO Color & Texture Interactor, for Architects, Designers, Contractors, and Homeowner to use for comparing stone colors and textures side by side when making material selections for projects.



Visit www.stoneorigins.com today to get a better view of your natural cut stone and cast stone color and texture options.

Shown left, the SO Color & Texture Interactor.

Table of Contents



Product Groups

Columns	4-5
Mantels	6-7
Wall Veneer	8-9
Wall Cladding	10-11
Sinks	12-13
Baseboards and Profiles	14-15
Wainscot	16-17
Architectural Tile	18-21
Pool and Patio	22-25

Stone Types

Travertine	26-27
Marble	28-29
Granite	30-31
Slate	30-31
Limestone	32-33
Cantera	34-35
Cast Stone	34-35

Technical

Caring for Stone	36
Order Information	36
Stone Origins Unit	37
Stone Origins Pricing	38
FAQ	39

Columns



Cantera Columns

Cantera adds a distinctively different style to architectural columns. The texture and movement within the stone gives each unit an old world feel.

Type Description	Primary View	Modifiers	Surname
Columns	Straight	SmoothSolid	Crema Blanca Tuscan

	X&D	Z	Y	UnitID	Cost Factor	Weight/Ea
CremaBlancaTuscan1	10"	10"	72"	17080	40909	594
CremaBlancaTuscan2	10"	10"	96"	17081	54546	792
CremaBlancaTuscan3	12"	12"	96"	17148	54598	1144
CremaBlancaTuscan4	12"	12"	120"	17082	68182	1430
CremaBlancaTuscan5	14"	14"	120"	17160	77323	1960
CremaBlancaTuscan6	14"	14"	144"	17083	92728	2352
CremaBlancaTuscan7	16"	16"	144"	17170	103697	3600
CremaBlancaTuscan8	16"	16"	168"	17145	120909	4200

Type Description	Primary View	Modifiers	Surname
Columns	Straight	SmoothSolid	Limestone Tuscan

	X&D	Z	Y	UnitID	Cost Factor	Weight/Ea
LimestoneTuscan1	10"	10"	72"	17006	40909	594
LimestoneTuscan2	10"	10"	96"	17007	54546	792
LimestoneTuscan3	12"	12"	96"	17149	54598	1144
LimestoneTuscan4	12"	12"	120"	17028	68182	1430
LimestoneTuscan5	14"	14"	120"	17161	77323	1960
LimestoneTuscan6	14"	14"	144"	17029	92728	2352
LimestoneTuscan7	16"	16"	144"	17171	103697	3600
LimestoneTuscan8	16"	16"	168"	17030	120909	4200

Type Description	Primary View	Modifiers	Surname
Columns	Straight	SmoothSolid	Travertine Tuscan

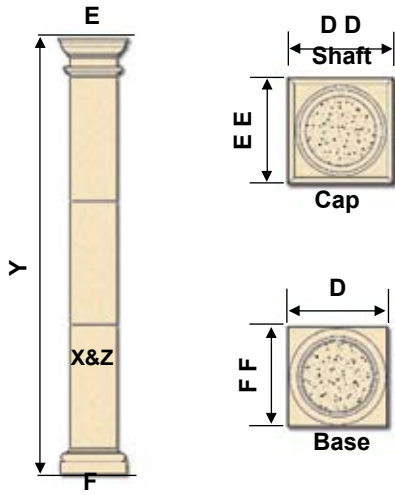
	X&D	Z	Y	UnitID	Cost Factor	Weight/Ea
TravertineTuscan1	10"	10"	72"	17031	40909	594
TravertineTuscan2	10"	10"	96"	17032	54546	792
TravertineTuscan3	12"	12"	96"	17147	54598	1144
TravertineTuscan4	12"	12"	120"	17033	68182	1430
TravertineTuscan5	14"	14"	120"	17159	77323	1960
TravertineTuscan6	14"	14"	144"	17034	92728	2352
TravertineTuscan7	16"	16"	144"	17169	103697	3600
TravertineTuscan8	16"	16"	168"	17035	120909	4200

Type Description	Primary View	Modifiers	Surname
Columns	Straight	SmoothSolid	Cantera Tuscan

	X&D	Z	Y	UnitID	Cost Factor	Weight/Ea
CanteraTuscan1	10"	10"	72"	17036	30409	492
CanteraTuscan2	10"	10"	96"	17037	40215	656
CanteraTuscan3	12"	12"	96"	17151	40468	832
CanteraTuscan4	12"	12"	120"	17038	50420	1040
CanteraTuscan5	14"	14"	120"	17163	54698	1420
CanteraTuscan6	14"	14"	144"	17039	70910	1704
CanteraTuscan7	16"	16"	144"	17164	71059	2640
CanteraTuscan8	16"	16"	168"	17040	82728	3080

Type Description	Primary View	Modifiers	Surname
Columns	Straight	SmoothSolid	Conchuela Tuscan

	X&D	Z	Y	UnitID	Cost Factor	Weight/Ea
ConchuelaTuscan1	10"	10"	72"	17041	40909	492
ConchuelaTuscan2	10"	10"	96"	17042	54546	656
ConchuelaTuscan3	12"	12"	96"	17150	54598	832
ConchuelaTuscan4	12"	12"	120"	17043	68182	1040
ConchuelaTuscan5	14"	14"	120"	17162	77323	1420
ConchuelaTuscan6	14"	14"	144"	17078	92728	1704
ConchuelaTuscan7	16"	16"	144"	17168	103699	2640
ConchuelaTuscan8	16"	16"	168"	17079	120909	3080

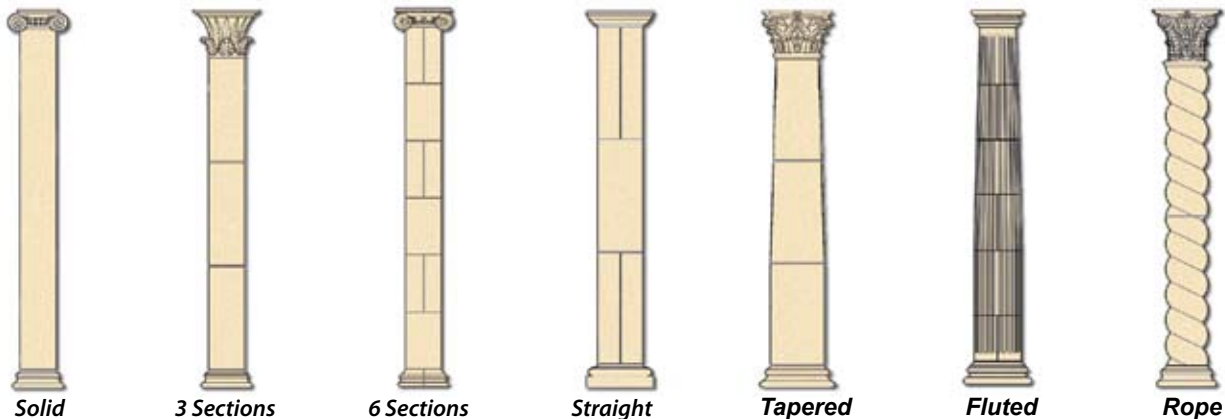


Tuscan

A classical order of Roman origin, basically a simplified Roman Doric. Tuscan columns are characterized by a heaviness to their shafts and simple, ring like capitals with no decoration. The ratio of the shaft base diameter (in inches) is approximately equal to 1.5 times the height (in feet) for tapered shaft columns and 1.28 for straight shaft columns. Shafts are available in smooth or fluted surface.

Stone Origins offers custom columns.
Let your distinctive style and imagination design your own unique custom columns.

Column shafts are available as follow:



Columns available in Hollow (Split and Cored) or Solid. Weight will be approximately 15% less than that shown for the solid columns. Note: Tapered columns available. Add 20% to cost factor shown.

Doric

Roman Doric columns are quite classical in the Roman order of architecture. They have simple lines, heavy shafts and undecorated capitals. The ratio of the shaft base diameter (in inches) is approximately equal to 1.5 times the height (in feet) for tapered shaft columns.



Ionic

The 2nd order of classical columns was developed in a Greek colony in the 6th century B.C. It is characterized by the spiral volutes of its capital. Ionic column capitals are rectangular and use highly decorated spiral volutes. The ration of the shaft base diameter (in inches) is approximately equal to 1.25 times the height (in feet) for tapered shaft columns and 1.0 for straight shaft columns.



Corinthian

The 3rd and most ornate of the five classical orders, was developed in the 4th century B.C. Developed by the Greeks but used more extensively in Roman architecture. Similar to the Ionic order but usually more slender proportions. It is characterized by a deep bell - shaped capital decorated with acanthus leaves and an



Mantels

From a simple Profile....



Complex carving...



Stone Origins also makes custom Fireplace Mantels.



Simple



Complex



Wall Veneer



Type Description	Primary View	Modifiers	Surname
Panels, Cut	Rectangular	Honed	Cantera

	X	Z	Y	UnitID	CF/Panel	Wt/Panel
Cantera Wall1	12"	3/4"	24"	17590	545	16
Cantera Wall2	24"	3/4"	24"	17591	1182	32

All Cantera colors are the same price. Please specify color at time of order.

For an added touch, consider using a main color and one or more accent

Type Description	Primary View	Modifiers	Surname
Panels, Cut	Rectangular	SawCut	Conchuela

	X	Z	Y	UnitID	CF/Panel	Wt/Panel
Conchuela Wall1	12"	1"	24"	17583	796	21
Conchuela Wall2	24"	1 1/2"	24"	17584	2455	62

Type Description	Primary View	Modifiers	Surname
Panels, Cut	Rectangular	SawCut	Cordova Cream

	X	Z	Y	UnitID	CF/Panel	Wt/Panel
Cordova Cream Wall1	12"	1"	24"	17585	818	24
Cordova Cream Wall2	12"	2"	24"	17586	1228	48
Cordova Cream Wall3	24"	1 1/2"	24"	17587	2182	72
Cordova Cream Wall4	24"	2"	24"	17601	2636	96
Cordova Cream Wall5	24"	2"	36"	17602	3954	144
Cordova Cream Wall6	24"	3"	36"	17603	5646	216
Cordova Cream Wall7	36"	3"	36"	17604	8469	324
Cordova Cream Wall8	36"	4"	36"	17605	10800	378

Type Description	Primary View	Modifiers	Surname
Panels, Cut	Rectangular	SawCut	French CoralStone

	X	Z	Y	UnitID	CF/Panel	Wt/Panel
French CoralStone Wall1	12"	1"	24"	17592	814	25
French CoralStone Wall2	12"	1 3/4"	24"	17593	1086	44
French CoralStone Wall3	16"	1"	24"	17594	1450	34
French CoralStone Wall4	16"	1 3/4"	24"	17595	1693	59
French CoralStone Wall5	24"	1 3/4"	24"	17596	2718	88

Type Description	Primary View	Modifiers	Surname
Panels, Cut	Rectangular	SawCut	Fossil Stone

	X	Z	Y	UnitID	CF/Panel	Wt/Panel
Fossil Stone Wall1	12"	1"	24"	17597	814	20
Fossil Stone Wall2	24"	1 1/2"	24"	17606	2456	58

Type Description	Primary View	Modifiers	Surname
Panels, Cut	Rectangular	Honed	Travertine Crema

	X	Z	Y	UnitID	CF/Panel	Wt/Panel
Travertine Crema Wall1	12"	3/4"	24"	17588	864	78
Travertine Crema Wall2	24"	3/4"	24"	17589	1910	156

Mix sizes to create unique, random patterns for your wall. Custom sizes and thicknesses available in all wall panels. Send us your plans or sketches for estimates.

H - Honed
P - Polished
S - Saw Cut



Travertine Crema

H/P



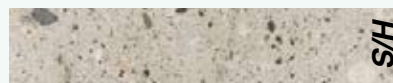
Marble Crema Marfil

H/P



Marble Carrara

H/P



Cantera*

S/S



Limestone Buff Leuders

S/S



Limestone Corova Cream

S/H



Limestone Fossil Stone

S/H



Limestone French Coral

S/H



Limestone Indiana

S/H



Limestone Jerusalem

H/P



Limestone Texas Fossil

S/H



Conchuela

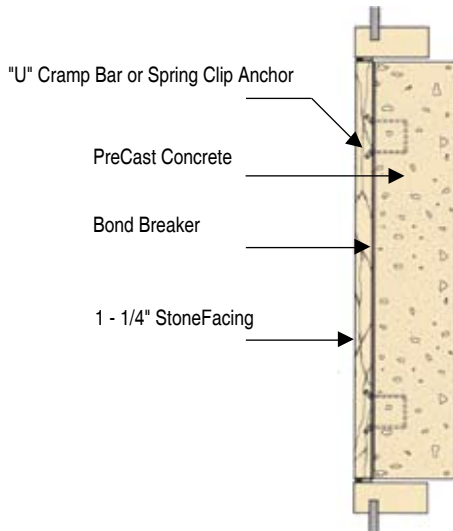
H/P

	12 X 3/4 X 24	12 X 1 X 24	12 X 1 3/4 X 24	12 X 2 X 24	16 X 1 X 24	16 X 1 3/4 X	24 X 3/4 X 24	24 X 1 1/2 X 24	24 X 1 3/4 X 24	24 X 2 X 24	24 X 2 X 36	24 X 3 X 36	36 X 3 X 36	36 X 4 X 36
Travertine Crema	✓						✓							
Marble Crema Marfil	✓	✓		✓						✓	✓			
Marble Carrara	✓	✓		✓						✓	✓			
Cantera*	✓						✓							
Limestone Buff Leuders		✓		✓				✓		✓	✓	✓	✓	✓
Limestone Corova Cream		✓		✓				✓		✓	✓	✓	✓	✓
Limestone Fossil Stone		✓						✓						
Limestone French Coral		✓	✓			✓	✓		✓					
Limestone Indiana		✓		✓				✓						
Limestone Jerusalem	✓	✓		✓	✓									
Limestone Texas Fossil		✓		✓				✓		✓	✓	✓		
Conchuela		✓						✓						

* Available in Blanca, Cafe, Naranja, Negra, Pinon Sta., Lucla, Rosa

** Available in custom sizes, patterns, finishes, and stone.

Wall Veneer



Basic use for exterior cladding or facing for structural elements.

Exterior Stone Veneer may be installed by several methods:

Standard Set - utilizes nonstaining, relieving angles, strap anchors, cramps, wire, dowels, and mortar. Recommended thickness of stone panels for low-rise construction (two to four stories depending on climate and seismic conditions) is 3/4"; recommended thickness for multistory construction is 1 1/4" or thicker.

Mechanical System - incorporate stone channeled to fit into slots in steel or aluminum frames, or drilled for dowels or bolts which may be fabricated on or off site.

Other systems include panels as large as 4' by 8' of various backing materials to which thin stone tiles are affixed by epoxy, latex-Portland cement or silicone.

Consideration should be given to the various features of each system in making a selection for a specific installation.

A minimum of four anchors should be provided for panels up to 12 sq. ft. of surface area.

Final design should always be based on specific physical property values for the stone to be used.

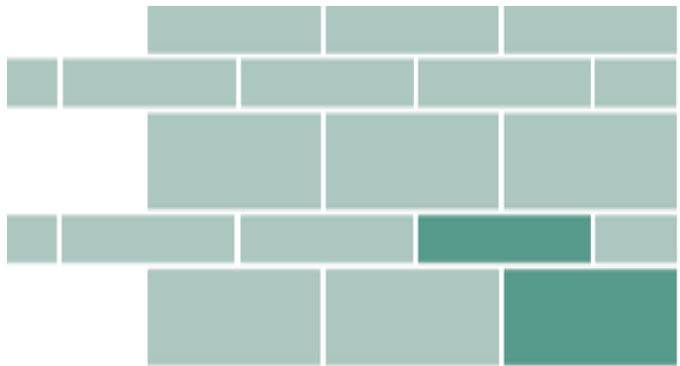
Limestone adds a distinct look and style to any exterior facade. Wall veneer and custom accents create dramatic focal points and pull architectural design elements together into perfect harmony.

Wall Veneer Pattern Options

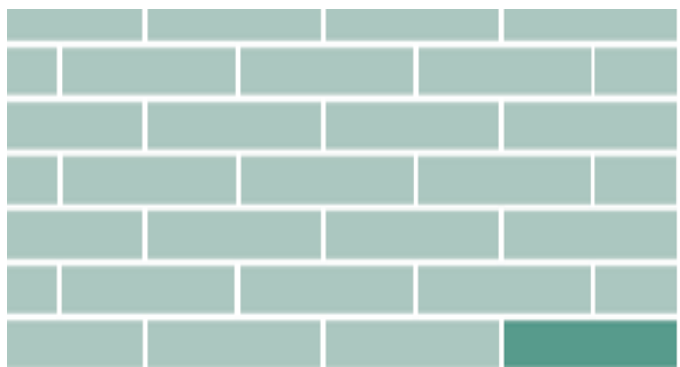
*These are just a few pattern options available through Stone Origins. Wall veneer patterns are not limited to the following patterns. Stone Origins also has the ability to create custom patterns to fit your needs.



Coursed Bond, Ranged



Coursed Broken Bond, Ranged



Coursed Bond, Ranged

For more information, please call STONE ORIGINS.

Finishes:

B = Builders
C = Chopped
R = Rough Back

These stones are used for Wall Cladding, Retaining Walls, Entries and similar applications. *Images are not an exact replica of stone type, but only a general representation. Stones may vary according to time, place and by each load.

Material is sold by the ton. Freight paid by client from distribution point.



Blanco Chalk Chopped

Random, Broken Coursed and Range



Granbury Builders

Uncoursed Cobweb and Roughly Squared



Granbury Chopped

Random, Broken Coursed and Range



Indian Builders

Uncoursed Cobweb and Roughly Squared



Indian Chopped

Random, Broken Coursed and Range



Lueders Builders

Uncoursed Cobweb and Roughly Squared



Lueders Chopped

Random, Broken Coursed and Range



Lueders Rough Back

Random, Broken Coursed and Range



Milsap Builders

Uncoursed Cobweb and Roughly Squared



Milsap Chopped

Random, Broken Coursed and Range

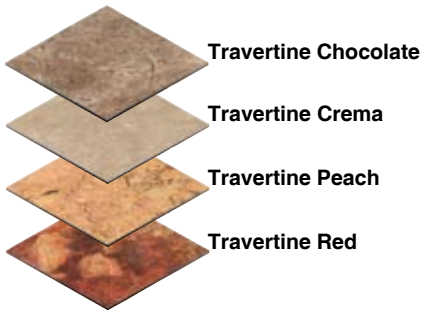
Sinks



Beautify your bathroom with the distinctive look of natural cut stone by Stone Origins



Overmount lip or mount vessel style.



Type Description	Primary View	Modifiers			Surname		
Sinks, Cut	Round	X	Z	Y	UnitID	CF/EA	Wt/EA
Travertine Chocolate		6"	16"	16"	17752	15909	50
Travertine Chocolate		8 3/4"	18"	18"	17759	19886	63
Travertine Crema		6"	16"	16"	17753	15909	50
Travertine Crema		8 3/4"	18"	18"	17758	19886	63
Travertine Peach		6"	16"	16"	17754	15909	50
Travertine Peach		8 3/4"	18"	18"	17757	19886	63
Travertine Red		6"	16"	16"	17755	15909	50
Travertine Red		8 3/4"	18"	18"	17756	19886	63

Custom Sinks available, send us your ideas



Sink shown with custom carved front



Type Description	Primary View	Modifiers			Surname		
Sinks, Cut	Rectangular	X	Z	Y	UnitID	CF/EA	Wt/EA
Travertine Crema		10 1/2"	20"	32"	18407	47500	200

Custom Marble and Granite sinks available, please call for more



Baseboards and Profiles

Profil



DGO Bullnose

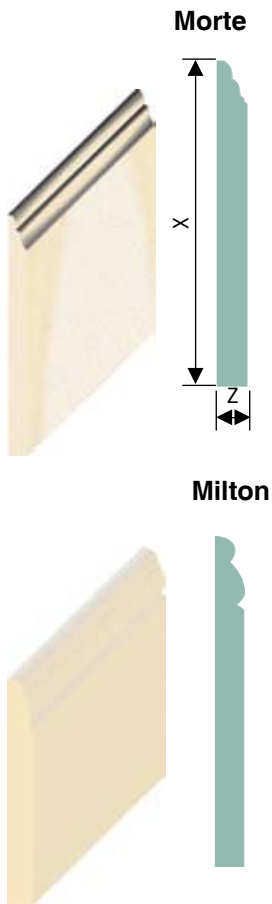


Durango Bullnose



San Pablo Chair Rail

Baseboards



Morte

Milton

Type Description	Primary View	Modifiers	Surname
Banding		Honed	TravertineCrema
		X Z Y	UnitID Cost Factor/Lf Weight/Lf
TravertineCrema Milton	7 ³ / ₁₆ "	5/8"	12" 17313 909 5
TravertineCrema Morte	8"	1"	12" 17314 728 5

Available in Crema only.

Type Description	Primary View	Modifiers	Surname
Banding		Honed	CanteraBlanca
		X Z Y	UnitID Cost Factor/Lf Weight/Lf
CanteraBlanca Milton	7 ³ / ₁₆ "	5/8"	12" 17318 818 5
CanteraBlanca Morte	8"	1"	12" 17317 637 5

Type Description	Primary View	Modifiers	Surname
Banding		Honed	CanteraPinionSt.Lucia
		X Z Y	UnitID Cost Factor/Lf Weight/Lf
CanteraPinionSt.Lucia Milton	7 ³ / ₁₆ "	5/8"	12" 17486 818 5
CanteraPinionSt.Lucia Morte	8"	1"	12" 17487 637 5

Type Description	Primary View	Modifiers	Surname
Banding		Honed	CanteraRivieraBeige
		X Z Y	UnitID Cost Factor/Lf Weight/Lf
CanteraRivieraBeige Milton	7 ³ / ₁₆ "	5/8"	12" 17484 818 5
CanteraRivieraBeige Morte	8"	1"	12" 17485 637 5

Type Description	Primary View	Modifiers	Surname
Banding		Honed	Conchuela
		X Z Y	UnitID Cost Factor/Lf Weight/Lf
ConchuelaMilton	7 ³ / ₁₆ "	5/8"	12" 17323 909 5
ConchuelaMorte	8"	1"	12" 17324 728 5

● Custom Baseboards available
All baseboard profiles made to order.
Available in honed finish only.

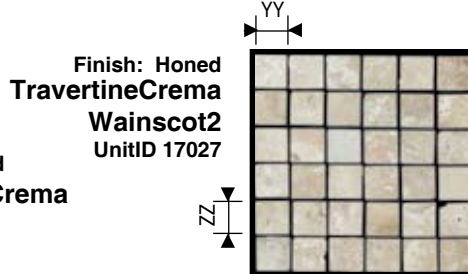
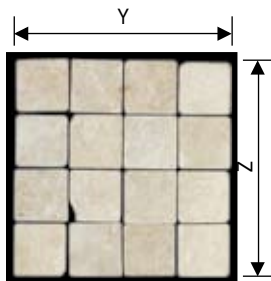
Note: Stone Origins's baseboard profiles are only available in 24" lengths.



Wainscot tile has many design uses in many areas of your home or office.

A few areas include:

- Kitchen Backsplashes
- Showers
- Tile Accents
- Pattern Design



Keeping an open mind while designing your project allows additional options to present themselves. The kitchen backsplash, above, was created by installing Architectural Tiles, refer to page 9.

Type Description Primary View Modifiers Surname
Pavers, Cut Box10SqFt Honed Travertine CremaWainscot

	X	Z&Y	ZZ&YY	UnitID	CF/SqFt	CF/Crate	Wt/Crate
● Travertine CremaWainscot1	3/8"	12"	1"	17026	289	2892	60
● Travertine CremaWainscot2	3/8"	12"	2"	17027	248	2477	60
● Travertine CremaWainscot3	3/8"	12"	3"	17153	248	2477	60
● Travertine CremaWainscot4	3/8"	4"	4"	17154	233	2331	60
● Travertine CremaWainscot5	3/8"	6"	6"	17155	233	2331	60

Note: (●) indicates tiles supplied on mesh backing.

Type Description Primary View Modifiers Surname
Pavers, Cut Box10SqFt Honed Travertine ChocolateWainscot

	X	Z&Y	ZZ&YY	UnitID	CF/SqFt	CF/Crate	Wt/Crate
● Travertine ChocolateWainscot1	3/8"	12"	1"	17431	289	2893	60
● Travertine Chocolate Wainscot3	3/8"	12"	3"	17432	248	2477	60
● Travertine Chocolate Wainscot4	3/8"	4"	4"	17433	233	2331	60
● Travertine Chocolate Wainscot5	3/8"	6"	6"	17434	233	2331	60

Note: (●) indicates tiles supplied on mesh backing.

Type Description Primary View Modifiers Surname
Pavers, Cut Box10SqFt Honed Travertine PeachWainscot

	X	Z&Y	ZZ&YY	UnitID	CF/SqFt	CF/Crate	Wt/Crate
● Travertine PeachWainscot2	3/8"	12"	2"	17439	248	2477	60
● Travertine PeachWainscot4	3/8"	4"	4"	17438	233	2331	60
● Travertine PeachWainscot5	3/8"	6"	6"	17435	233	2331	60

Note: (●) indicates tiles supplied on mesh backing.

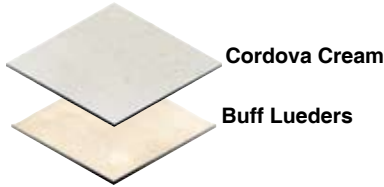
Type Description Primary View Modifiers Surname
Pavers, Cut Box10SqFt Honed Travertine RedWainscot

	X	Z&Y	ZZ&YY	UnitID	CF/SqFt	CF/Crate	Wt/Crate
● Travertine RedWainscot4	3/8"	4"	4"	17437	233	2331	60
● Travertine RedWainscot5	3/8"	6"	6"	17436	233	2331	60



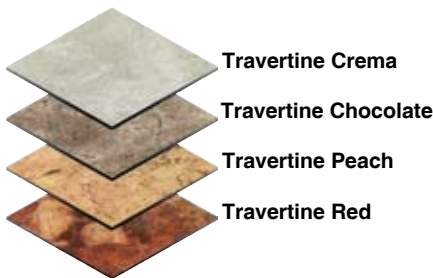


Architectural Tile



Type Description	Primary View	Modifiers	Surname				
Pavers, Cut	Box10SqFt	Honed	Texas Limestone				
	X	Z	Y	UnitID	CF/Tile	CF/Crate	Wt/Crate
Limestone BuffLueders12	12"	1/2"	12"	17441	289	2888	60
Limestone BuffLueders12	12"	3/4"	12"	17446	375	3751	90
Limestone BuffLueders16	16"	1/2"	16"	17442	289	2888	48
Limestone CordovaCream12	12"	1/2"	12"	17440	289	2888	60
Limestone CordovaCream12	12"	3/4"	12"	17445	375	3751	90
Limestone CordovaCream16	16"	1/2"	16"	17443	289	2888	48
Limestone CordovaCream16	16"	3/4"	16"	17444	375	3751	72

Type Description	Primary View	Modifiers	Surname				
Pavers, Cut	Crate	Honed Pattern	Texas Limestone Versailles				
	X	Z	Y	UnitID	CF/Tile	CF/Crate	Wt/Crate
Versailles CordovaCream	12"	1/2"	12"	17447	-	3751	60
Versailles BuffLueders	12"	1/2"	12"	17448	-	3751	60



Type Description	Primary View	Modifiers	Surname				
Pavers, Cut	Box10SqFt	Honed	Travertine				
	X	Z	Y	UnitID	CF/Tile	CF/Box	Wt/Box
Travertine Crema12	12"	3/8"	12"	17000	218	2175	60
Travertine Crema16	16"	3/8"	16"	17001	225	2250	60
Travertine Chocolate12	12"	3/8"	12"	17383	250	2500	60
Travertine Chocolate16	16"	3/8"	16"	17386	260	2600	60
Travertine Peach12	12"	3/8"	12"	17382	268	2675	60
Travertine Peach16	16"	3/8"	16"	17387	278	2775	60
Travertine Red12	12"	3/8"	12"	17380	258	2575	60
Travertine Red16	16"	3/8"	16"	17389	300	3000	60

Type Description	Primary View	Modifiers	Surname				
Pavers, Cut	Crate	Honed	Travertine				
	X	Z	Y	UnitID	CF/Tile	CF/Crate	Wt/Crate
Travertine Crema24	24"	1/2"	24"	17002	275	19250	2170
Travertine Crema24	24"	3/4"	24"	17003	325	16250	1950

Type Description	Primary View	Modifiers	Surname				
Pavers, Cut	Box10SqFt	Polished	Travertine				
	X	Z	Y	UnitID	CF/Tile	CF/Box	Wt/Box
Travertine Crema12	12"	3/8"	12"	17004	218	2175	60
Travertine Crema16	16"	3/8"	16"	17005	233	2325	60
Travertine Chocolate12	12"	3/8"	12"	17384	260	2600	60
Travertine Chocolate16	16"	3/8"	16"	17385	270	2700	60
Travertine Red12	12"	3/8"	12"	17381	268	2675	60
Travertine Red16	16"	3/8"	16"	17388	310	3100	60



Type Description	Primary View	Modifiers	Surname				
Pavers, Cut	Box10SqFt	Polished	Marble				
	X	Z	Y	UnitID	CF/Tile	CF/Box	Wt/Box
Marble Botticino12	12"	3/8"	12"	17394	268	2677	60
Marble CremaMarfil12	12"	3/8"	12"	17008	225	2250	60
Marble CremaMarfil16	16"	3/8"	16"	17009	238	2380	60
Marble Dorado12	12"	3/8"	12"	17391	288	2880	60
Marble Dorado16	16"	3/8"	16"	17396	305	3046	60
Marble LightEmperador12	12"	3/8"	12"	17393	327	3263	60
Marble DarkEmperador12	12"	3/8"	12"	17395	327	3263	60
Marble NegraMonterrey12	12"	3/8"	12"	17392	302	3015	60
Marble St.ThomasLila12	12"	3/8"	12"	17390	278	2767	60



Architectural Tile



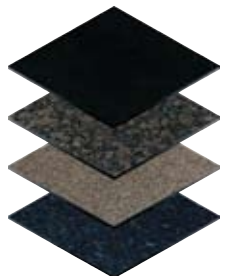
- Cantera Blanca
- Cantera Cafe
- Cantera Naranja
- Cantera Negra
- Cantera PinonSantaLucia
- Cantera Rosa

Type Description	Primary View	Modifiers	Surname							
Pavers, Cut	Box10SqFt	Honed	Cantera	X	Z	Y	UnitID	CF/Tile	CF/Crate	Wt/Crate
Cantera Blanca12	12"	3/4"	12"	17013	163	1630	70			
Cantera Blanca16	16"	3/4"	16"	17014	175	1750	72			
Cantera Cafe12	12"	3/4"	12"	17403	163	1630	70			
Cantera Cafe16	16"	3/4"	16"	17412	175	1750	72			
Cantera Naranja12	12"	3/4"	12"	17404	163	1630	70			
Cantera Naranja16	16"	3/4"	16"	17409	175	1750	72			
Cantera Negra12	12"	3/4"	12"	17405	163	1630	70			
Cantera Negra16	16"	3/4"	16"	17410	175	1750	72			
Cantera PinonSantaLucia12	12"	3/4"	12"	17407	163	1630	70			
Cantera PinonSantaLucia16	16"	3/4"	16"	17408	175	1750	72			
Cantera Rosa12	12"	3/4"	12"	17406	163	1630	70			
Cantera Rosa16	16"	3/4"	16"	17411	175	1750	72			



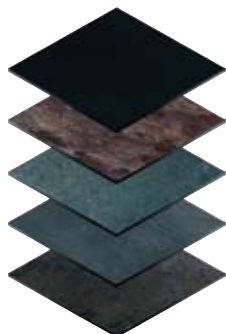
- Conchuela

Type Description	Primary View	Modifiers	Surname							
Pavers, Cut	Box10SqFt	Honed	Conchuela	X	Z	Y	UnitID	CF/Tile	CF/Crate	Wt/Crate
Conchuela12	12"	1/2"	12"	17015	198	1980	50			
Conchuela16	16"	1/2"	16"	17016	210	2100	48			
Conchuela16	16"	3/4"	16"	17413	216	2160	54			



- Granite AbsoluteBlack
- Granite BalticBrown
- Granite GailloAntico
- Granite VerdeLabrador

Type Description	Primary View	Modifiers	Surname							
Pavers, Cut	Box10SqFt	Polished	Granite	X	Z	Y	UnitID	CF/Tile	CF/Crate	Wt/Crate
Granite AbsoluteBlack12	12"	3/8"	12"	17010	325	3250	60			
Granite BalticBrown12	12"	3/8"	12"	17397	357	3575	60			
Granite GailloAntico12	12"	3/8"	12"	17398	413	4128	60			
Granite VerdeLabrador12	12"	3/8"	12"	17399	366	3656	60			



- Slate EasternBlack
- Slate Kashmere
- Slate ForestGreen
- Slate Pewter
- Slate Multi-Colored

Type Description	Primary View	Modifiers	Surname							
Pavers, Cut	Box10SqFt	Gauged	Slate	X	Z	Y	UnitID	CF/Tile	CF/Crate	Wt/Crate
Slate ForestGreen12	12"	1/2"	12"	17011	103	1031	50			
Slate Multi-Colored12	12"	1/2"	12"	17400	139	1391	50			

Type Description	Primary View	Modifiers	Surname							
Pavers, Cut	Box10SqFt	UnGauged	Slate	X	Z	Y	UnitID	CF/Tile	CF/Crate	Wt/Crate
Slate EasternBlack12	12"	1/2"	12"	17402	106	1056	50			
Slate Kashmere12	12"	1/2"	12"	17401	119	1184	50			
Slate Pewter12	12"	1/2"	12"	17012	103	1031	50			



Sample Tile Patterns

12" X 12" 16" X 16" 18" X 18" 24" X 24" Also available in custom sizes and patterns.



Versaille Pattern



Octagon w/Inset Pattern



Chevron Pattern



Diagonal Pattern



Diagonal w/Inset Pattern



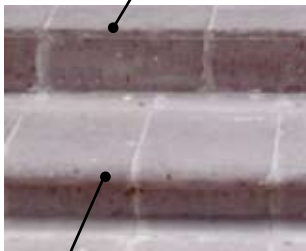
Frame Pattern

Pool and Patio



Cut stone pool coping is a natural accent for cut stone pavers, see page 22.

CanteraRosa Paver1
UnitID 17493



CanteraRosa Pool1 Coping (used as steps)
UnitID 17419



Conchuela Paver
UnitID 17327

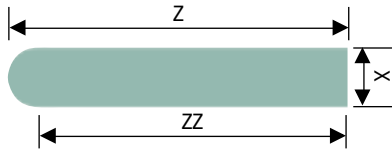
Type Description	Primary View	Modifiers	Surname				
Pavers, Cut		Honed	Cantera Pool Pavers				
	X	Z	Y	UnitID	CF/Tile	CF/Box	Wt/Tile
Cantera Blanca Paver1	2"	12"	12"	17489	350	-	16
Cantera Cafe Paver1	2"	12"	12"	17326	350	-	16
Cantera Naranja Paver1	2"	12"	12"	17490	350	-	16
Cantera Negra Paver1	2"	12"	12"	17491	350	-	16
Cantera Pinion Paver1	2"	12"	12"	17492	350	-	16
Cantera Rosa Paver1	2"	12"	12"	17493	350	-	16

Type Description	Primary View	Modifiers	Surname				
Pavers, Cut		Honed	Conchuela Paver				
	X	Z	Y	UnitID	CF/Tile	CF/Box	Wt/Tile
ConchuelaPaver1	1 1/2"	12"	12"	17327	550	-	15



NO DIVING

Pool and Patio



Type Description	Primary View	Modifiers	Surname
PoolCopingCut	Box10LF	Honed	Cantera BlancaPool

	X	Z	Y	UnitID	CF/Ea	CF/Box	Wt/Box
Cantera BlancaPool1	2"	4"	12"	17416	150	4500	240
Cantera BlancaPool2	2"	12"	12"	17423	450	4500	180
Cantera BlancaPool3	2"	24"	12"	17427	900	4500	180

Type Description	Primary View	Modifiers	Surname
PoolCopingCut	Box10LF	Honed	Cantera CafePool

	X	Z	Y	UnitID	CF/Ea	CF/Box	Wt/Box
Cantera CafePool1	2"	4"	12"	17417	150	4500	240
Cantera CafePool2	2"	12"	12"	17425	450	4500	180
Cantera CafePool3	2"	24"	12"	17426	900	4500	180

Type Description	Primary View	Modifiers	Surname
PoolCopingCut	Box10LF	Honed	Cantera NaranjaPool

	X	Z	Y	UnitID	CF/Ea	CF/Box	Wt/Box
Cantera NaranjaPool1	2"	4"	12"	17418	150	4500	240
Cantera NaranjaPool2	2"	12"	12"	17424	385	3850	180
Cantera NaranjaPool3	2"	24"	12"	17428	770	3850	180

Type Description	Primary View	Modifiers	Surname
PoolCopingCut	Box10LF	Honed	Cantera NegraPool

	X	Z	Y	UnitID	CF/Ea	CF/Box	Wt/Box
Cantera NegraPool1	2"	4"	12"	17020	150	4500	240
Cantera NegraPool2	2"	12"	12"	17021	450	4500	180
Cantera NegraPool3	2"	24"	12"	17022	900	4500	180

Type Description	Primary View	Modifiers	Surname
PoolCopingCut	Box10LF	Honed	Cantera PinonPool

	X	Z	Y	UnitID	CF/Ea	CF/Box	Wt/Box
Cantera PinonPool1	2"	4"	12"	17420	150	4500	240
Cantera PinonPool2	2"	12"	12"	17421	385	3850	180
Cantera PinonPool3	2"	24"	12"	17429	770	3850	180

Type Description	Primary View	Modifiers	Surname
PoolCopingCut	Box10LF	Honed	Cantera RosaPool

	X	Z	Y	UnitID	CF/Ea	CF/Box	Wt/Box
Cantera RosaPool1	2"	4"	12"	17419	150	4500	240
Cantera RosaPool2	2"	12"	12"	17422	385	3850	180
Cantera RosaPool3	2"	24"	12"	17430	770	3850	180

Type Description	Primary View	Modifiers	Surname
PoolCopingCut	Box10LF	Honed	Conchuela Pool

	X	Z	Y	UnitID	CF/Ea	CF/Box	Wt/Box
Conchuela Pool1	1 1/2"	4"	12"	17023	183	5500	150
Conchuela Pool2	1 1/2"	12"	12"	17024	550	5500	150
Conchuela Pool3	1 1/2"	24"	12"	17025	1100	5500	150

Type Description	Primary View	Modifiers	Surname
PoolCopingCut	Box10LF	Honed	Travertine CremaPool

	X	Z	Y	UnitID	CF/Ea	CF/Box	Wt/Box
Travertine CremaPool1	1 1/2"	4"	12"	17017	167	5000	240
Travertine CremaPool2	1 1/2"	12"	12"	17018	458	4584	220
Travertine CremaPool3	1 1/2"	24"	12"	17019	917	4584	220

Note: Travertine pool coping only available in color Crema.



ConchuelaPool1 Coping.
UnitID 17023



ConchuelaPool2 Coping.
UnitID 17024



Travertine Pool Coping.
Available only in color Crema.
UnitID 17017



T raver^tine



When popularity is your primary goal in your search for the perfect tile, you need not look much further than Travertine. Its popularity, in floor tile and in architectural accents, is based on its coloration, texture and exquisite movement.

Travertine Crema*

Recommended for both interior and exterior applications, Travertine Crema is one of the most popular colors of Travertine available. Its popularity is based on its earth tone coloration which allows it to blend beautifully with any decor or color palette.

Because Travertine Crema is available in columns, fireplace surrounds, pool coping and custom design work, it is a natural to use in architectural accents for Travertine floors.

A material almost identical to onyx in composition, Travertine contains irregularly-shaped voids in fairly straight lines ranging in size from pinhead to egg. Travertine's beauty can be attributed to its movement of coloration and texture.

Best suited for interior applications, Travertine is available in sizes suitable for floor tile and wall cladding. Refer to Travertine Crema, below, for options available for this color.

Travertine comes in a honed finish, a polished finish or a tumbled finish (wainscot installations). The honed and tumbled finishes are popular in basic bathroom installations. Polished tiles are popular for use in more formal applications, such as a vanity bathroom.

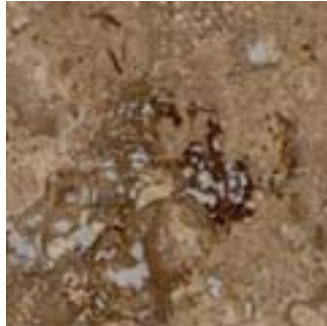
Travertine tiles are available in mesh backed panels for wainscot and backsplash applications.

Travertine tile is available in Polished or Honed finishes, with the exception of wainscot tile, which is available in Tumbled only.

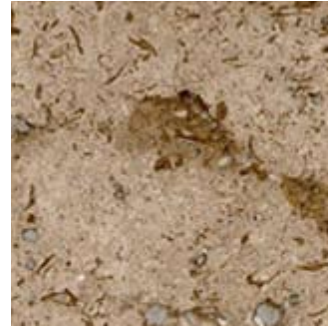
S

tone Origin Colors & Finishes

T



Chocolate Honed



Chocolate Polished



Crema Honed

r



Crema Polished



Peach Honed



Peach Polished

a

v

e

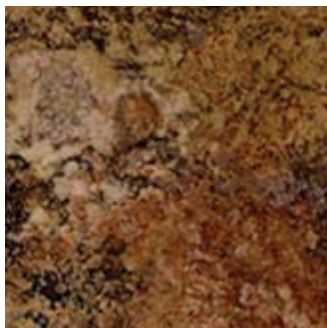
r

f

i

n

e



Red Polished



Red Honed

Gauged - Each tile will be the same thickness. Interior use suggested: kitchen, bathroom.

Ungauged - Each stone will have a natural cleft causing irregular thickness. Exterior use suggested: patios.

All natural stone products should be professionally sealed upon installation. Cut stone products are not recommended in freeze/ thaw environments without special treatment. Cut stone products will vary in movement and shade from Unit to Unit.



Marble is undeniably beautiful and timeless and will always be the natural choice for your flooring needs.

Marble is composed of calcium carbonate and other components which give it color, pattern, and texture. Its ability to take on a high polish makes this stone very popular for setting moods and for pattern installations.

Best suited for interior applications, Marble is very popular in commercial projects, especially in lobby areas where making a good first impression is key.

Popular Colors

Recommended for interior applications, Marble BotticinoSemiClassico and Marble CremaMarfil Classico are both very popular colors. Their popularity is based on their earth tone coloration.

Popular Accents

Recommended for interior applications, Marble DarkEmperador and Marble NegraMonterrey are very popular for accent coloration. They are especially popular as masculine accents, such as a man's bath.

S

tone Origin Colors & Finishes

Marble



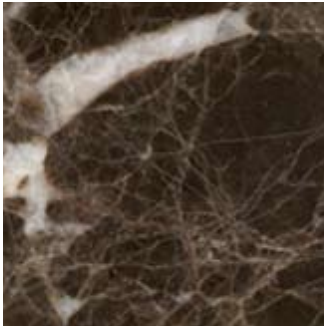
Botticino Semi Classico



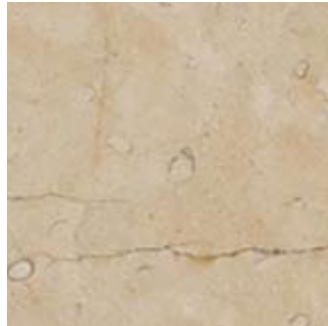
Carra



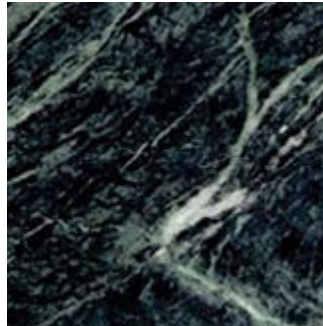
Crema Marfil Classico



Dark Emperador



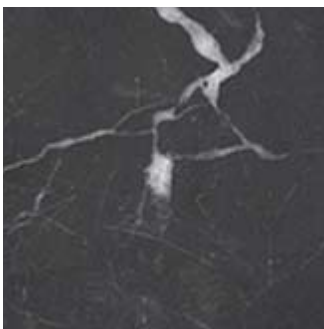
Dorado



Empress Green



Light Emperador



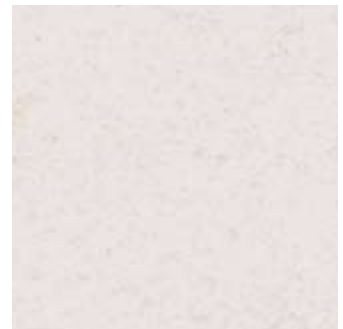
Negro Monterrey



Marble oro



St. Thomas Lila



Thassos Select

Gauged - Each tile will be the same thickness. Interior use suggested: kitchen, bathroom.

Ungauged - Each stone will have a natural cleft causing irregular thickness. Exterior use suggested: patios.

All natural stone products should be professionally sealed upon installation. Cut stone products are not recommended in freeze/ thaw environments without special treatment. Cut stone products will vary in movement and shade from Unit to Unit.

Granite

Granite can be used in countless ways including:

*Kitchens & Counters
Floors
Bathrooms
Exteriors*

Granite tile is available only in a Polished finish.

Granite is an igneous rock having crystals or grains of visible size and consisting mainly of quartz and mica or other colored minerals. The beauty of its interesting palette is due to the coloration by the minerals and the volcanic plumes from which it was created.

Recommended for interior applications, Granite is ten times harder than other stone which makes it popular in heavy foot traffic areas and hard wear applications.

In residential and commercial applications alike, Granite is often used to set off an entry or to accent more formal areas.

Slate

The natural look and texture of slate tile gives an old world feel to any decor. Reminiscent of Country French manors, this versatile pattern displays a random, multicolored installation worthy of praise.



Slate is a hard, brittle metamorphic rock characterized by good cleavage along parallel planes. Its texture and coloration make it a popular choice for country decors, such as a Country French manor. Primarily recommended for interior applications, but with some exterior use, Slate is a popular, cost effective floor covering material and is often used as an accent element.



Slate tile creates a warm, comfortable mood. Accent with a cast stone fireplace.

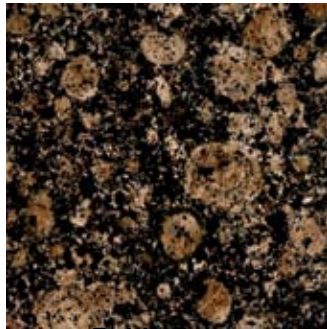
Slate tile is available in Gauged and Ungauged finishes.

S

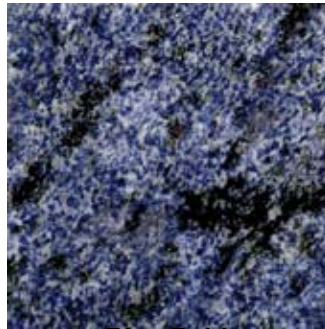
tone Origin Colors & Finishes



Absolute Black



Baltic Brown



Blue Bahia



Gaillo Antico



Verde Labrador

G r a n -



Eastern Black



Forest Green



Kashmere



Multi Color



Pewter

S late

Gauged - Each tile will be the same thickness. Interior use suggested: kitchen, bathroom.

Ungauged - Each stone will have a natural cleft causing irregular thickness. Exterior use suggested: patios.

All natural stone products should be professionally sealed upon installation. Cut stone products are not recommended in freeze/ thaw environments without special treatment. Cut stone products will vary in movement and shade from Unit to Unit.

Limestone



Conchuela/French Coral/Fossil Stone

Fossilized stones contain the remains of multiple shell life fossils due to their formation in ancient shallow seas. The beauty of the three dimensional movement and texture lends them to water environments.

Primarily used for exterior applications, with some interior (custom column, shown right), their composition and innate properties of slip resistance and coolness to touch make fossilized stones perfect for pools, patios, decking, coping, and treads.

Limestone is available only in a Honed finish.



Limestone Crema Blanca

Crema Blanca mimics the look of highly prized Italian stone. The color and texture of the stone make it an excellent choice for three dimensional applications, such as columns and fireplace surrounds (left).

Primarily for interior applications, Crema Blanca can be honed for usage in less formal locations or can be polished for more formal applications.

Crema Blanca is available in a Honed finish or a Polished finish.



Texas Limestone

Limestone's earth tone coloration and texture allow it to accent any decor. Primarily for interior applications, its popularity is based on its usage in architectural formats and its large range of production applications.

With Limestone, if you can conceive the design idea, Stone Origins can create the final product.

Fossilized limestone is available only in an Unfilled and Sawcut finish.



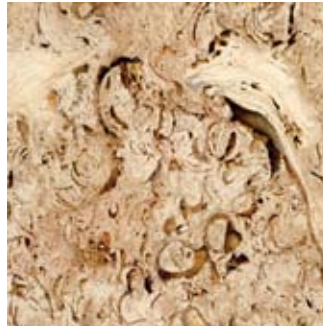
tone Origin Colors & Finishes



Buff Lueders



Cordova Cream



Fossil Stone



French Coral Stone



Hauteville



Indiana



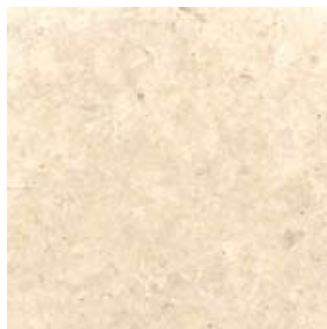
Jerusalem



Saint Hubert



Texas Fossil



Texas Ivory

Gauged - Each tile will be the same thickness. Interior use suggested: kitchen, bathroom.

Ungauged - Each stone will have a natural cleft causing irregular thickness. Exterior use suggested: patios.

All natural stone products should be professionally sealed upon installation. Cut stone products are not recommended in freeze/ thaw environments without special treatment. Cut stone products will vary in movement and shade from Unit to Unit.



Cantera Riviera Beige*

Riviera Beige is only available for architectural products including columns, fireplace surrounds, and custom work. Its earth tone coloration and texture make it an excellent choice to accent the other Cantera colors.

Cantera has a sedimentary origin composed principally of calcite, dolomite or both. It is available in a large palette of colors and textures.

Primarily for exterior applications, i.e., architectural elements. Cantera's popularity is based on its cost effectiveness for exterior applications and its available range of colors without extra cost adjustments.

Its porous composition allows it to be cooler on the feet than other surfaces and allows it natural slip resistance.

Cantera is an excellent choice for outdoor applications, such as pools, patios, decking, coping, treads, and porte cocheres and interior architectural elements such as mantels, columns, and door surrounds.

Architecture can set a distinct motif for any commercial environment. Cantera exterior wall cladding and custom architectural accents make grand statements unlike any other of building material. Let your project stand out in the crowd.

Cast Stone

What is Cast Stone?

Dating back to around 500 BC, cast stone is a mix of crushed stone that has been compressed under extreme pressure into a pre-designed shape or form to create a man-made limestone. We call it hand-forged stone. A similar technique is used in metal casting.

This technique is very similar to that used by children everywhere to build sand castles by pressing moist sand into a bucket, only on a much grander, more permanent scale.

The final result of the process is a hand-forged limestone that is very difficult to distinguish from natural limestone.

The primary difference between cast stone and natural stone is cast stone's ability to be formed into complex shapes and designs while maintaining the strength characteristics of natural stone.

How long will cast stone last?

Structures from the Roman Empire built using cast stone parts are still in existence today, more than 2000 years later.

Since a time test for cast stone has not yet been developed, it is difficult to state just how long a cast stone part will last. However, it is safe to say that your cast stone will last many lifetimes.

Cast stone is more durable than natural limestone due to the process by which it is produced. By hand-forging each part, cast stone gains strength and durability without the air pockets that are common in natural stone

Stone Legends' greatest assets are complex shapes and the crispness of detail.

Our advantage comes from the vast experience of our craftsmen and artisans. Each stone is hand-made, maximizing the versatility of low yield quantities.

S

tone Origin Colors & Finishes

C

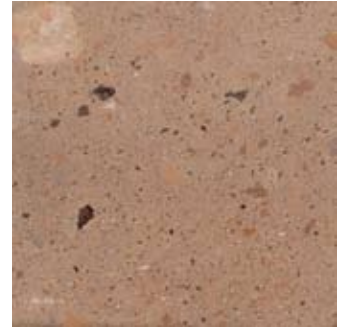
a
n
t
e
r
a



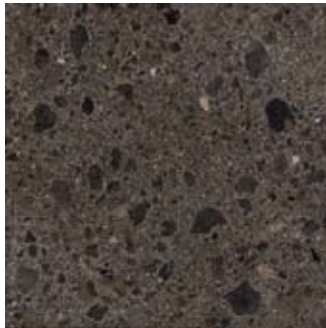
Blanca



Cafe



Naranja



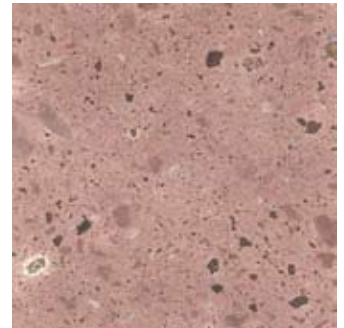
Negra



Pinon Santa Lucia



Riviera Beige



Rosa

Cantera products are available in an Unfilled and Honed fin-

C

a s t

S



Buff



Tan



White

Gauged - Each tile will be the same thickness. Interior use suggested: kitchen, bathroom.

Ungauged - Each stone will have a natural cleft causing irregular thickness. Exterior use suggested: patios.

All natural stone products should be professionally sealed upon installation. Cut stone products are not recommended in freeze/ thaw environments without special treatment. Cut stone products will vary in movement and shade from Unit to Unit.

Care Products



Using the proper sealing and cleaning products is important in maintaining the beauty of your stone. And they make routine maintenance easy. Today, there are many fine stone care products on the market. Stone Origins has chosen one of these companies, StoneTech Professional, Inc., to develop a stone care program specifically for our product line.

StoneTech offers:

Superior products

Excellent Tech Support

A conscious commitment to create products that are safer for the environment and your family.

Stone Sealer



Heavy Duty Stone Sealer



This program will allow the customer to know which sealer, daily cleaner, or stain remover is recommended for use at the time of the natural stone order.

You can now order your StoneTech care products from one source.

Call
1-888-STONEHELP
for more information on
StoneTech products.



AP Stone Tile Clean Set

Order

Placing an Order

Placing an order is simple. You send us your plans, ideas, desires, photos, or whatever. We respond with an estimate for your approval. Call us and we will help you select appropriate units, make suggestions on the best way to achieve the look you want and work with you to satisfy all your desires.

The more information you can furnish, the easier it is. However, we can and have worked with extremely sketchy ideas in the past. Call us toll-free at 888-398-1299. We are here to help you.

Pricing

Cost factors do not include shipping, administration, shop drawings, or sales tax within Texas. Cost factors are effective

October 1, 2002 and subject to change without notice. Orders less than \$3,000 must be 100% prepaid. Larger orders require a deposit to begin processing. All orders must be prepaid prior to shipment, including freight charges.

Sales tax is only charged on orders delivered within the State of Texas.

Customer Service

We value your business and your satisfaction is very important to us. Once you have signed a contract and sent in your deposit, shop drawings will be furnished for your approval. During your project, you will be updated regularly and notified of the shipping date upon completion.

Nationwide Shipping

We regularly ship across the country on dedicated flatbed trucks and by common carrier. You can be confident that your shipment will arrive safely and on time.

Cancellations & Returns

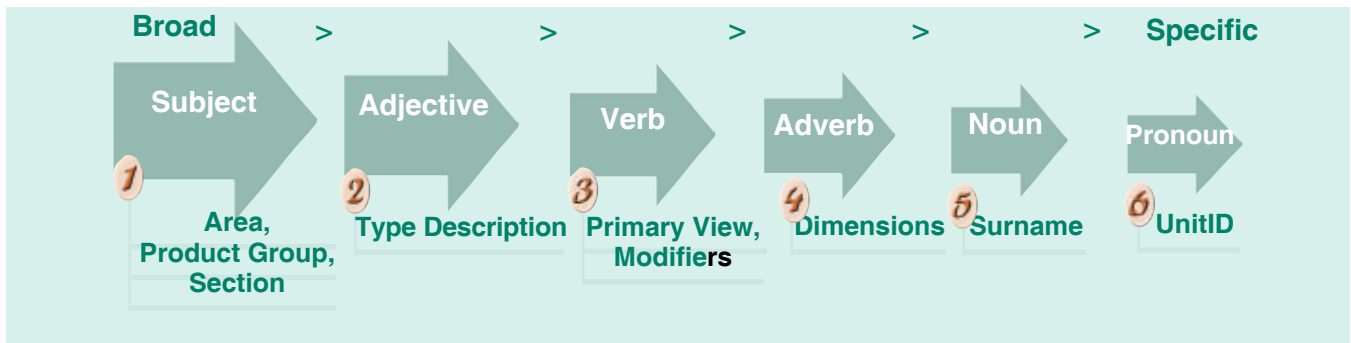
We charge a fee to cover any costs incurred on cancelled orders. Once an order has been released to fabrication, it cannot be cancelled or changed. Some items may be returned. All returns must be pre-approved by Stone Origins and a restocking fee is deducted from any refund due. Return freight charges are the responsibility of the customer. Original freight charges will not be

Unit Nomenclature

When searching for a Unit, it is helpful to realize that every unit has a unique name derived from an organized language. This language governs the Unit Nomenclature and allows a simplicity in Unit searches not previously available.

The Unit Nomenclature allows for a large range of searches from broad to specific. It is also organized to allow you to describe a Unit whether that Unit exists or has yet to be produced.

The following examples will introduce the Unit Nomenclature that will help you narrow your search down to the exact Unit that you desire.



Actual Unit Sentence:
 1 Floor Tile / 2 Pavers,Cut / 3 Box10SqFt/ 3 Honed / 4 x12x0&6y12 / 5 Travertine Crema12 / 6 17000

Architectural Tile

Catalog Unit List Association

The Unit Lists within this catalog were designed directly from the Unit Nomenclature.

Although the basic layout is slightly different graphically in order to place multiple Units within one sentence, the basic structure of the language still exists.

1 The Title Bar displays the Area or Product Group.

Type Description	Primary View	Modifiers	Surname	UnitID	CF/Tile	CF/Box
Pavers, Cut	Box10SqFt	Honed	Travertine Crema			
	X	Z	Y			
Wt/Box						
Travertine Crema12	12"	3/8"	12"	17000	218	2180 60

Typical Cost Index (CI) = \$.022

WWW.STONEORIGINS.COM

Material cost determined by multiplying:
Cost Factor (CF) by the Cost Index (CI)

Calculation used in the following Product Groups: Columns and Wall Cladding

Each Unit Basis

Cost Index varies by stone type and product type. See index below.

Type Description	Primary View	Modifiers			Surname	
Columns	Straight	Smooth	Solid	Travertine	Tuscan	
	X&D	Z	Y	UnitID	Cost Factor	Weight/Ea
TravertineTuscan1	10"	10"	72"	17031	40909	594
TravertineTuscan2	10"	10"	96"	17032	54546	792
TravertineTuscan4	12"	12"	120"	17033	68182	1430
TravertineTuscan6	14"	14"	144"	17034	92728	2352

Columns

Cantera (all colors)	.024
Conchuela	.024
Crema Blanca	.024
Texas Limestone	.026
Travertine	.026



USE: On units that are sold by Each Unit.

Example: TravertineTuscan 1 Column, UnitID 17031.

Cost Factor (CF / Each): 40,909
Cost Index (CI) x \$.026**

Cost per Each Unit: **\$1,064***

Pavers/Floor Tile

Cantera (all colors)	.022
Conchuela	.022
Granite (all colors)	.022
Marble (most colors)	.022
Negro Monterrey	.024
Slate (all colors)	.024
Texas Limestone	.024
Travertine (all colors)	.022

Linear Foot Basis

Calculation used in the following Product Groups: Baseboards, Floor Tile, Wainscot, Pool Coping and Patio Pavers

Type Description	Primary View	Modifiers			Surname		
PoolCoping, Cut Box	10LF	Honed	Travertine	Crema	Pool		
	X	Z	Y	UnitID	CF/LF	CF/Box	Wt/Box
TravertineCrema Pool	1 1/2"	4"	12"	17017	150	4500	240
TravertineCrema Pool	1 1/2"	12"	12"	17018	450	4500	220
TravertineCrema Pool	1 1/2"	24"	12"	17019	900	4500	220

Pool Coping

Cantera (all colors)	.020
Conchuela	.024
Travertine	.024

USE: On units that are sold by Linear Foot (LF).

Example: TravertineCrema Pool, UnitID 17018. 120 Linear Feet.

Cost Factor (CF / Each): 450
Cost Index (CI) x \$.024**



Cost per Linear Foot: \$10.08*
120 Linear Feet x 120 Lf

Wainscot (all colors)

Wall Cladding .022
(all stone types and colors shown)

Total Cost of Material

\$1,296.00*

All prices subject to change without notice.

* Material Cost only, excludes shipping, administrative and other charges required to complete your order. Any dimensional changes will affect pricing.
** The Cost Index is subject to change without notice. Orders are price checked at time of order.
Unit Lists displayed do not show all units available, refer to the Stone Origins

FAQ Questions

Q: We are planning a new home and want to use natural cut stone on the fireplace and interior columns. What should we do?

A: Stone Origins recommends that you call our toll-free number (888) 398-1299 and ask for our FREE catalog. We have columns in standard sizes in a variety of stones. Our fireplaces are all custom made to your design, but we also offer a wide selection of cast stone fireplaces through our sister company [Stone Magic](#). Send us a set of your plans and we will be able to prepare a detailed proposal for you for all the stone on your new home so you will know the cost of all the stone material delivered to your job site.

Q: I didn't see any prices on this web site. We want to remodel the entry, hallway and kitchen and put in some beautiful tile flooring, so how do I calculate the cost?

A: Order the FREE catalog from Stone Origins and while it is being delivered measure the square or rectangular areas to be covered to obtain the square footage. (The Surface Area Calculator is handy to use for this.) Now select the specific stone or combination of stones in the styles and colors that will fit your decor using your new catalog, the Stone Types pull-down menus above, or the Stone Origins Color Interactor®. Call the Sales Department at Stone Origins at (888) 398-1288 or fax this information using the info on the Contact Us page for a FREE proposal which will give you a detailed breakdown of the cost for your selection delivered to your location.

Q: Do you do the installation?

A: Stone Origins does not install stone. For that you will need to hire a masonry contractor. If you need assistance finding a masonry contractor in your area, please call us and we will be happy to provide the names of several. Remember that some are more expensive than others and that some may be currently booked.

Q: I want some octagonal shaped tiles for my new restaurant I am getting ready to build and I can't find them anywhere. Do you carry them?

A: These are considered "custom" items and although they are not listed on the web site, you will see examples of them in our catalog. Determine the stone, color and quantity that you will need. We will find the best source and quote you a price delivered to your job site and give you an idea of the required lead time. Once we have a signed order, we will have them cut and shipped directly to you.

Q: We are building a new house and want stone siding. What should I ask for and do you carry it?

A: What you want is referred to in the trade as "wall cladding" (as opposed to "wall veneer" which has a smooth surface and is square or rectangular). Wall cladding is sold by the ton and is a rough stone in sizes and cuts suitable for placement on the exterior wall of a commercial or residential project. It is also used for fences and exterior entries. The most common "cuts" of "wall cladding" are "Builders", "Chopped" and "Rough Back". Stone Origins carries the following stones:

Buff Lueders (Builders, Chopped & Rough Back)

Blanco Chalk (Chopped)

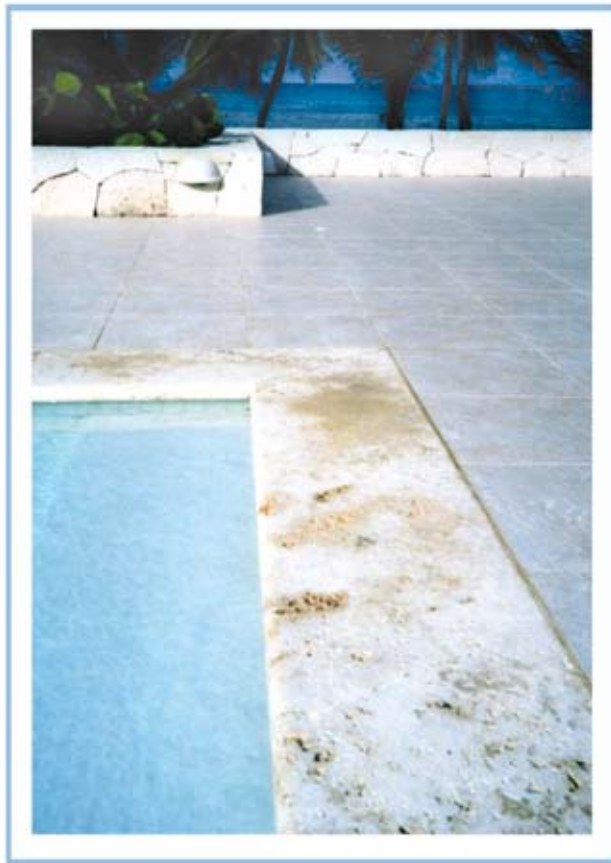
Granbury (Builders, Chopped)

Milsap (i.e. a Sandstone in Builders & Chopped)

Indian (i.e. an Oklahoma Limestone in Builders & Chopped)

Q: We live in Florida and want to put a "Fossil" finish on the exterior of our new home. I thought that was illegal. What can we do?

A: The use of live coral stone is definitely illegal, however Stone Origins sells a "Fossil Stone" which is quarried from ancient sea beds inland and many miles from the closest ocean. This stone is not illegal to use and produces a beautiful finish. It is ideal for wall veneer, walkways, caps for landscape walls, caps



WWW.STONEORIGINS.COM