

PHOTO SPECIFICATIONS

Requirements for Stone Legends Photography

- Minimum camera resolution is 6 Megapixels (2,800 x 2,100 approximately)
- Prefer tiff format, but will consider high-resolution max quality jpg.
- Must be in sharp focus, with no camera movement. (a tripod is helpful)
- Exposure must be correct, with very little absolute white and black areas.



Example Overexposed



Example Underexposed

- Strong Shadows may eliminate photos from consideration.



Example Strong Shadows

- We will retain the rights to use these photos in our media, in writing

Types of Photographs Requested

➤ Entire Building

- Directly in Front
 - Example
- At an Angle / Perspective
 - Example
- Sides and Back
 - Example

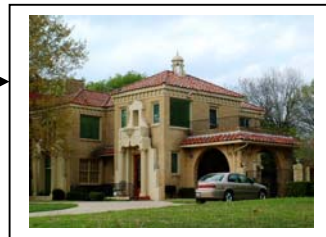


PHOTO SPECIFICATIONS - STONE LEGENDS PHOTOGRAPHY

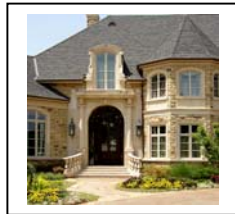
- Neighborhood shots, including landscape, surrounding area, and adjacent buildings.



Example

➤ Large Groups

- Entryway with Columns, Several window surrounds together, stairway, walls with piers and caps, etc.



Example



Example

➤ Single Item

- Window, Fountain, Fireplace, Column, Ornament, etc.



Example



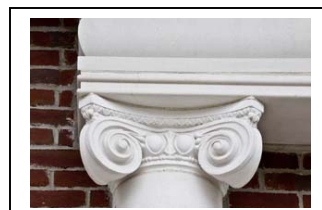
Example

➤ Close ups

- Cropped in shot of larger group or item, part of stair with several balustrade, One side of a gazebo, Section of pool



Example



Example

PHOTO SPECIFICATIONS - STONE LEGENDS PHOTOGRAPHY

- Close up of detail or carving



Example



Example

➤ Installation Shots

- Job site in various states of completion



Example



Example

- Close ups of construction materials and techniques.



Example



Example

➤ Artistic Shots

- Pictures that don't follow the above specification, or that break the above rules, but are especially attractive

Photo Specifications

The pictures need to be

- From a camera of at least 6 Megapixel, (3,000 x 2,100 pixel image approx.)
- Camera should be pro quality, with high quality lens and sensor chip.
- Well lit photo, with minimal black shadows and white highlights (avoid strong sunlight) (Slightly dark is preferable to too much light)
- Prefer tif files, but will accept high resolution, low compression jpg files. (May also accept raw format files.)
- In sharp focus
- Lowest possible ISO setting (100-200 minimum.)
- Unprocessed Image (i.e. no sharpening, or auto correction)
- Image should show the entire building clearly, no major obstructions.
- Shoot images with some background (lawn and sky visible) as well as cropped close.