

# Legendary estate across from Turtle Creek showcased by David Nichols

The 1922 estate at 4205 Lakeside was designed by Anton Korn, one of the most prominent architects in Highland Park, who called this style of architecture "Mid-Atlantic Colonies Georgian." The landmark estate, which has not been available for many years, is offered for \$8,995,000 by David Nichols of the Mathews Nichols Group at Allie Beth Allman & Associates.

The residence is situated atop a hill across from Turtle Creek and its George Seurat-styled park. The Park Cities Historical Society put its seal of approval

next to the front door. Through the legendary architect's design, the gentility in its presentation and the vigilant care by its owners, this home speaks to a time when gracious living was an art form, Nichols says.

The tree-shaded grounds feature mature oaks, a landscaped lawn and manicured hedges. Vehicles may be parked on the circular pebble-embedded driveway or driven through the electronic gate to the garages. Two garages are attached to the main home and two are in the carriage house, which encom-

passes an upstairs apartment.

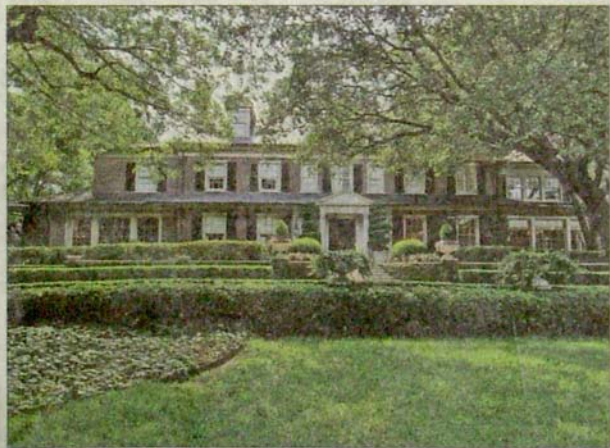
The three-level, Georgian-style mansion displays a slate pent roof, masonry walls, deep-green shutters, brick walls and a front terrace that extends the length of the home. The interior design features five master suites, six baths/dressing areas, two half-baths, offices on three levels, an elevator for the ground and second levels, hand-blown glass windows and 10-foot ceilings on the ground level. Additional amenities include hand-rubbed Bordeaux-patterned wood flooring, Martin Brothers custom paint finishes throughout and an abundance of storage.

A detailed entry tempietto features 8-foot glass-and-iron doors that open to a gallery hallway. The formal and informal living and dining rooms provide views of Connor Lake through nearly floor-to-ceiling paned windows of hand-blown restoration glass.

The kitchen is equipped with quality stainless appliances, a large center island, plentiful cupboards and cabinets and a 32-foot china and butler's pantry containing leaded-glass cabinets, closets and dozens of drawers for storage.

A loggia at the rear of the home allows for outdoor entertaining.

For more information, contact Nichols at 972-733-8860 or visit [mathews-nichols.com](http://mathews-nichols.com).



The Anton Korn-designed estate at 4205 Lakeside in Highland Park was built in 1922 and is offered for \$8,995,000. It includes five master suites, six baths/dressing areas and two half-baths.